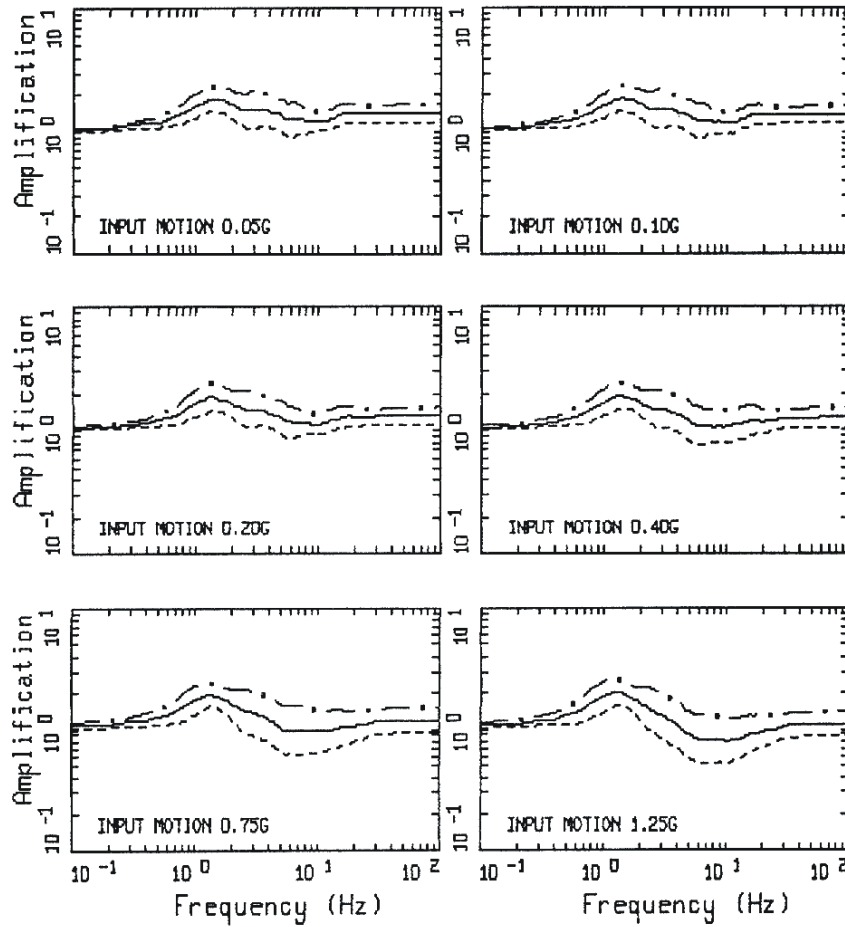
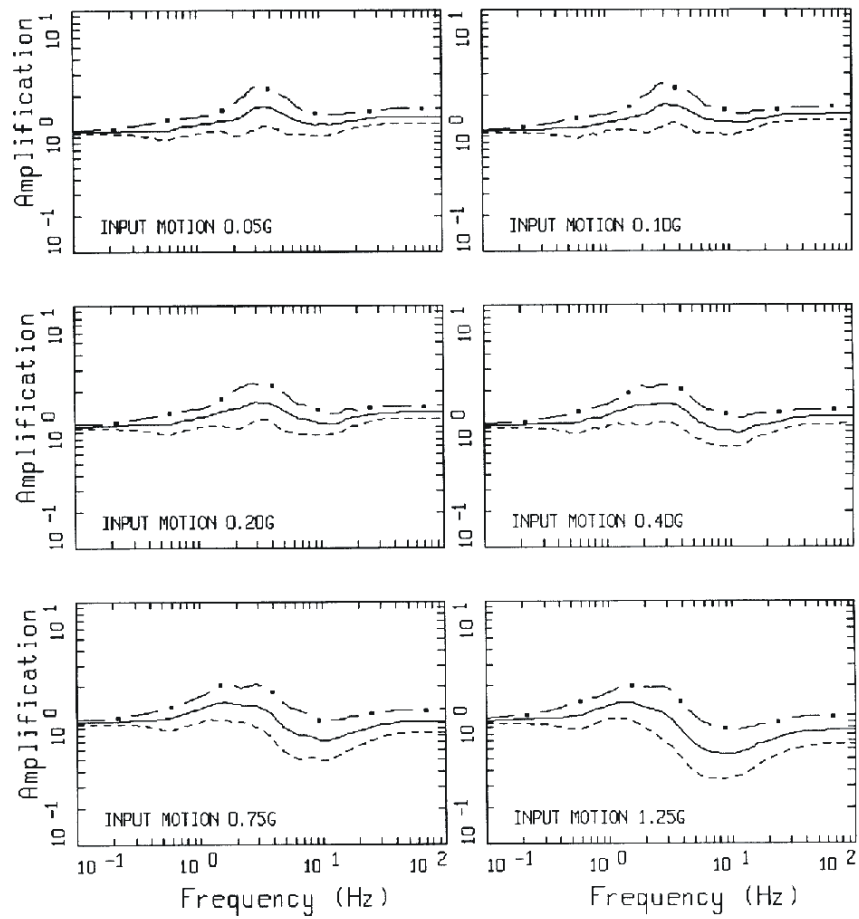


APPENDIX A

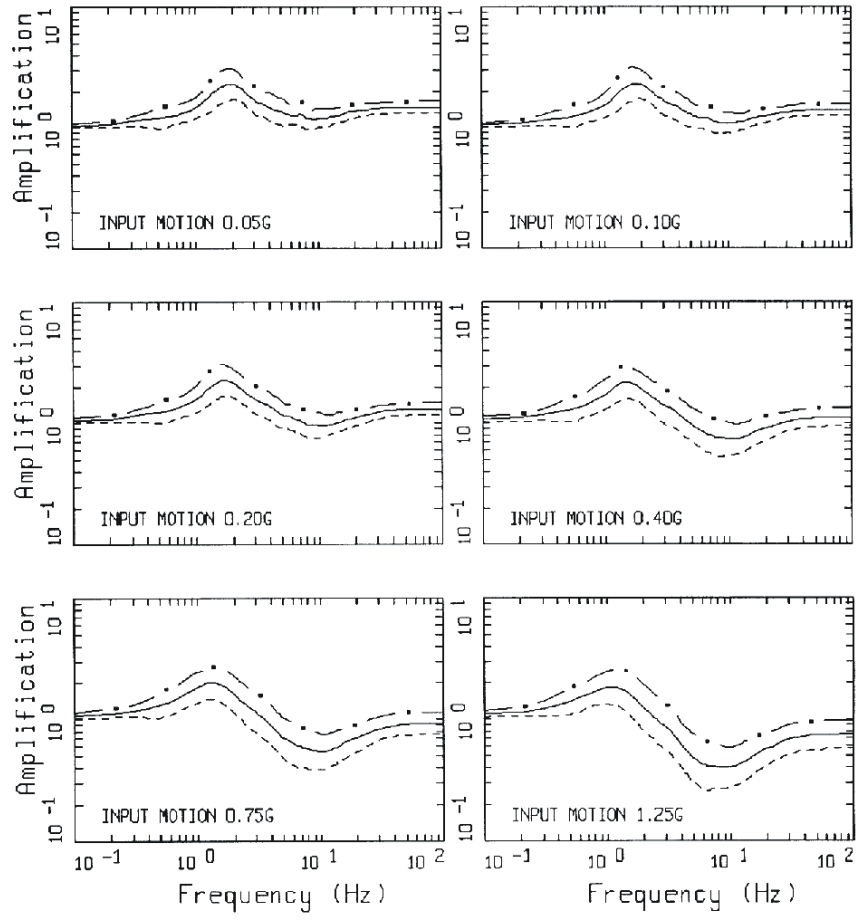
Amplification Factors (5% damped response spectra)
For The San Francisco Bay Area Based on Surface
Geology: TM_{zs} , QT_s , Q_{oa} , Q_{al} , and Q_m (Table 1).



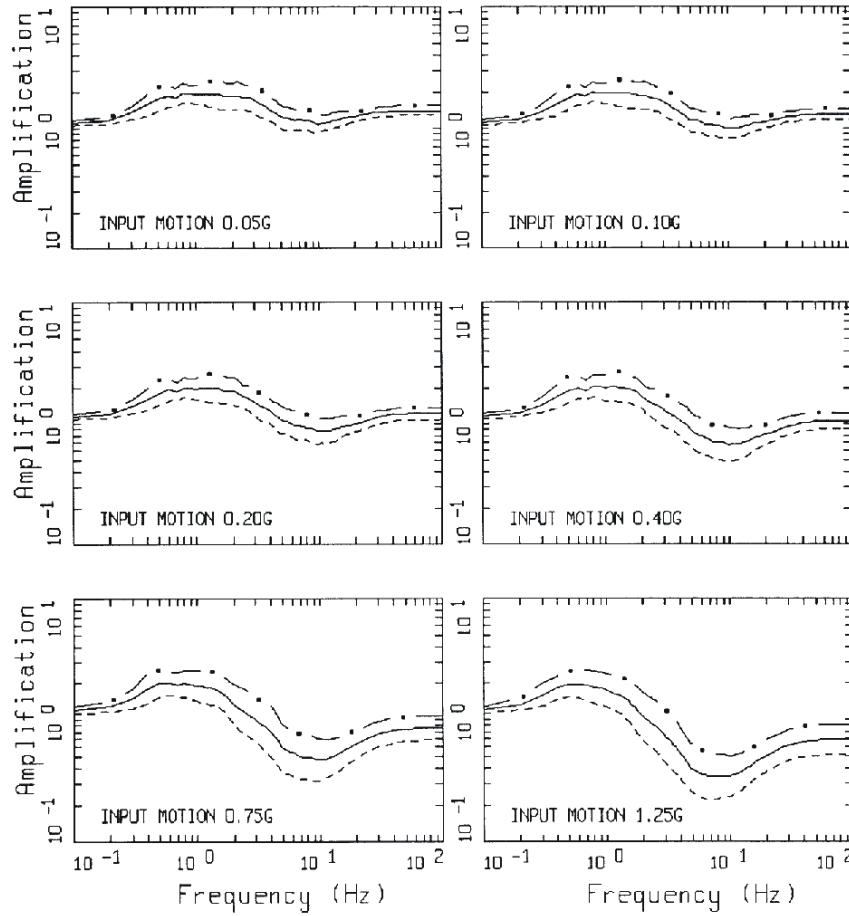
SF AMPLIFICATION
 TMzs



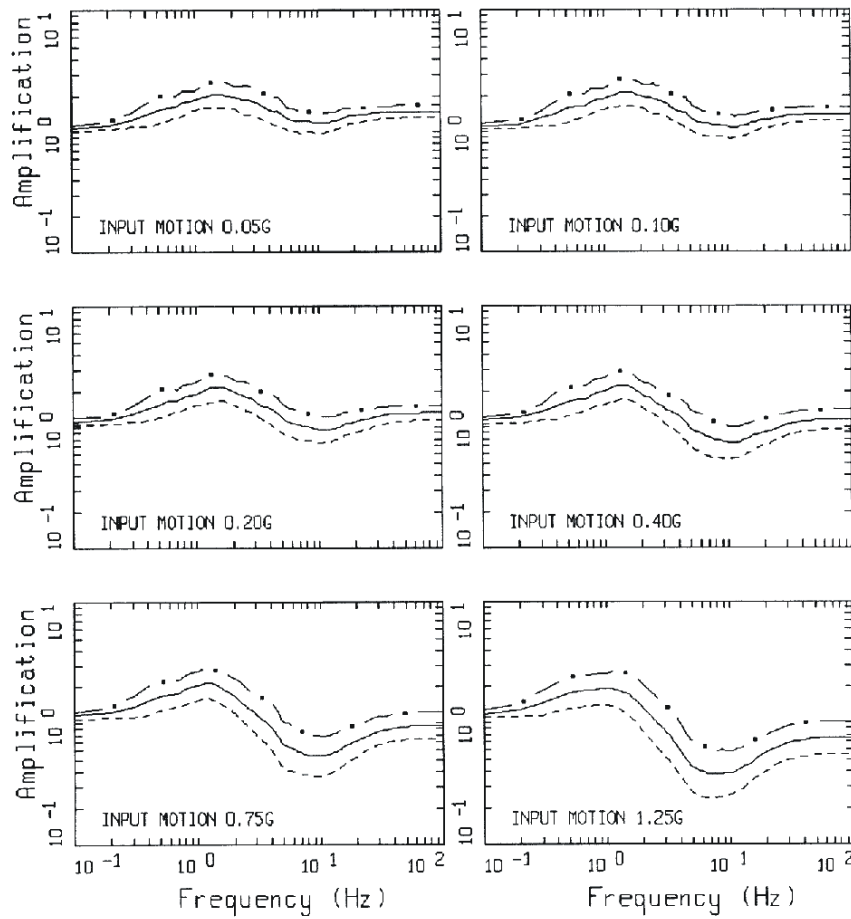
SF AMPLIFICATION
 QTs (30 - 150 ft)



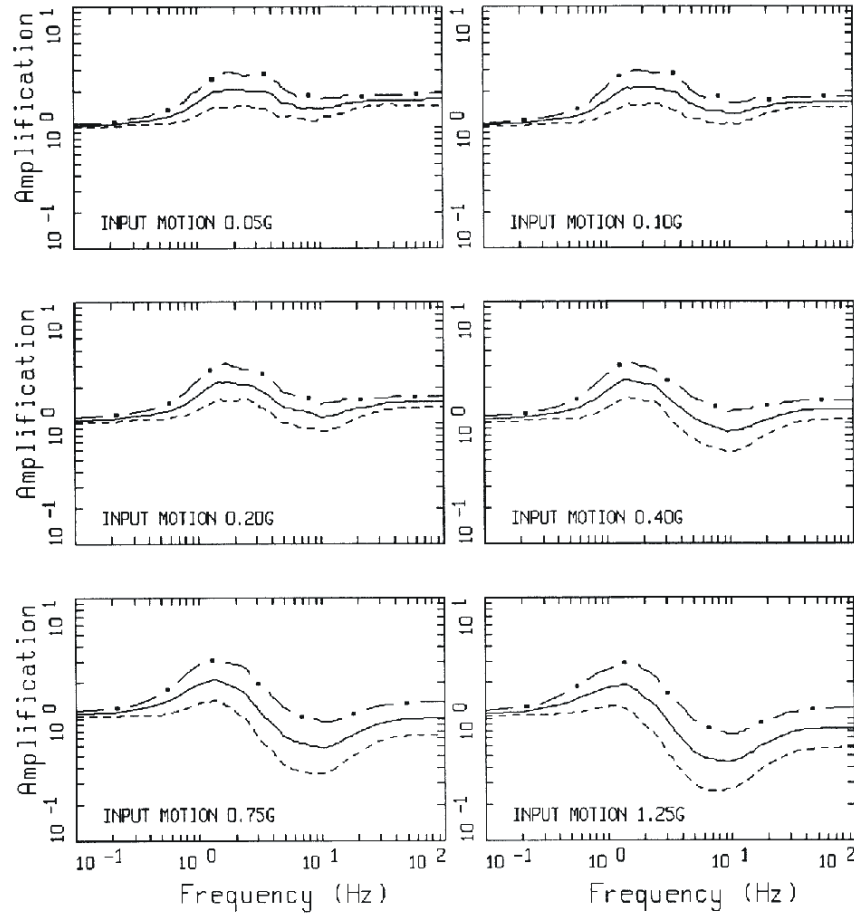
SF AMPLIFICATION
 QTs (150 - 350 ft)



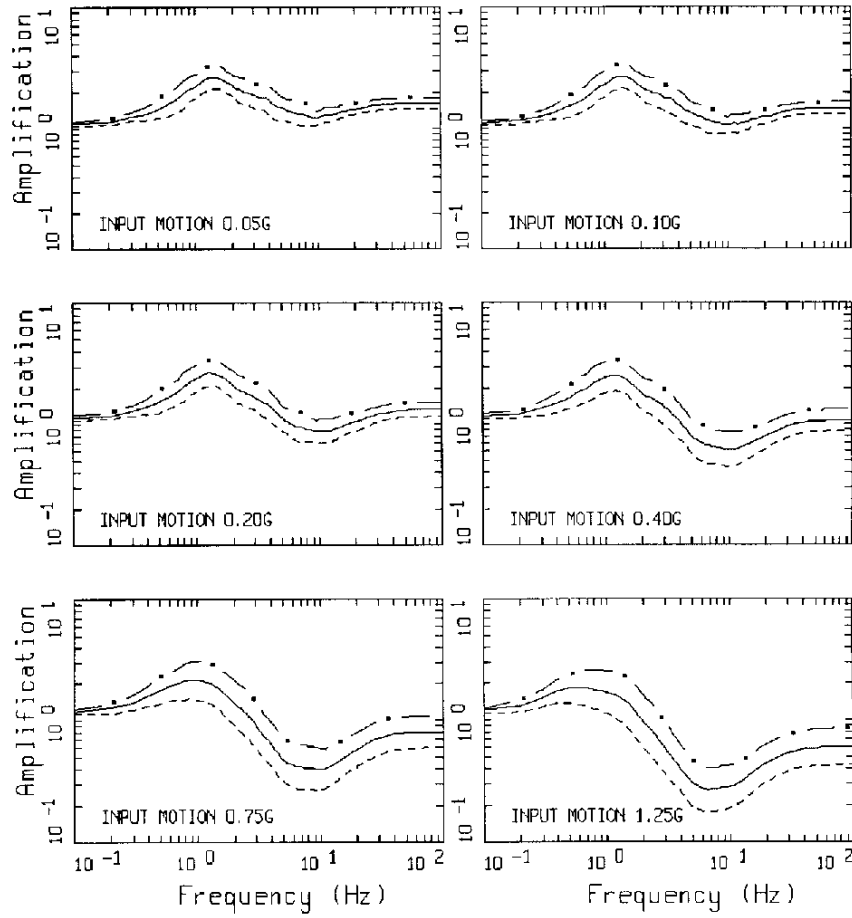
SF AMPLIFICATION
 QTs (350 - 650 ft)



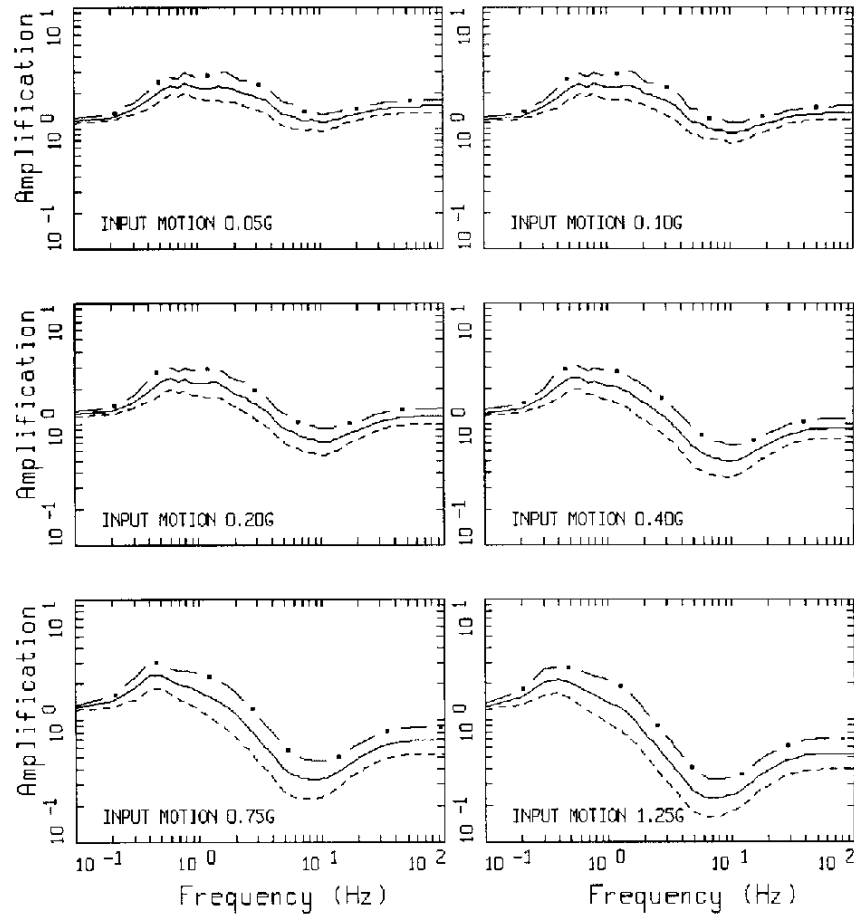
SF AMPLIFICATION
 QTs (30 - 650 ft)



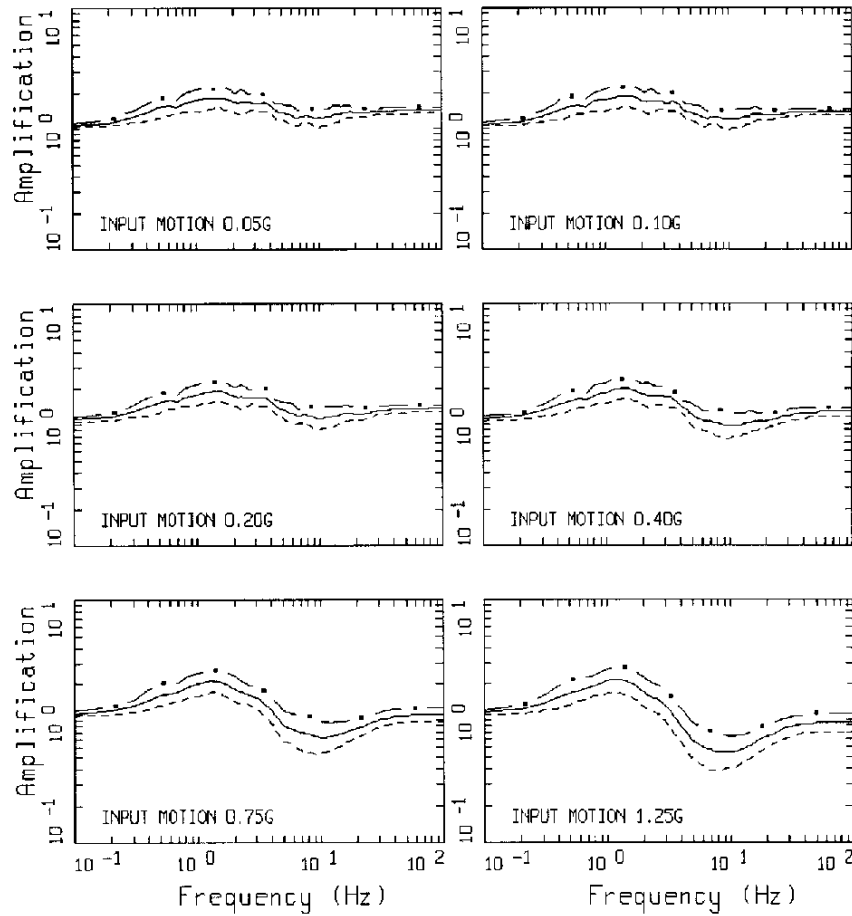
SF AMPLIFICATION
 QOA (30 - 150 ft)



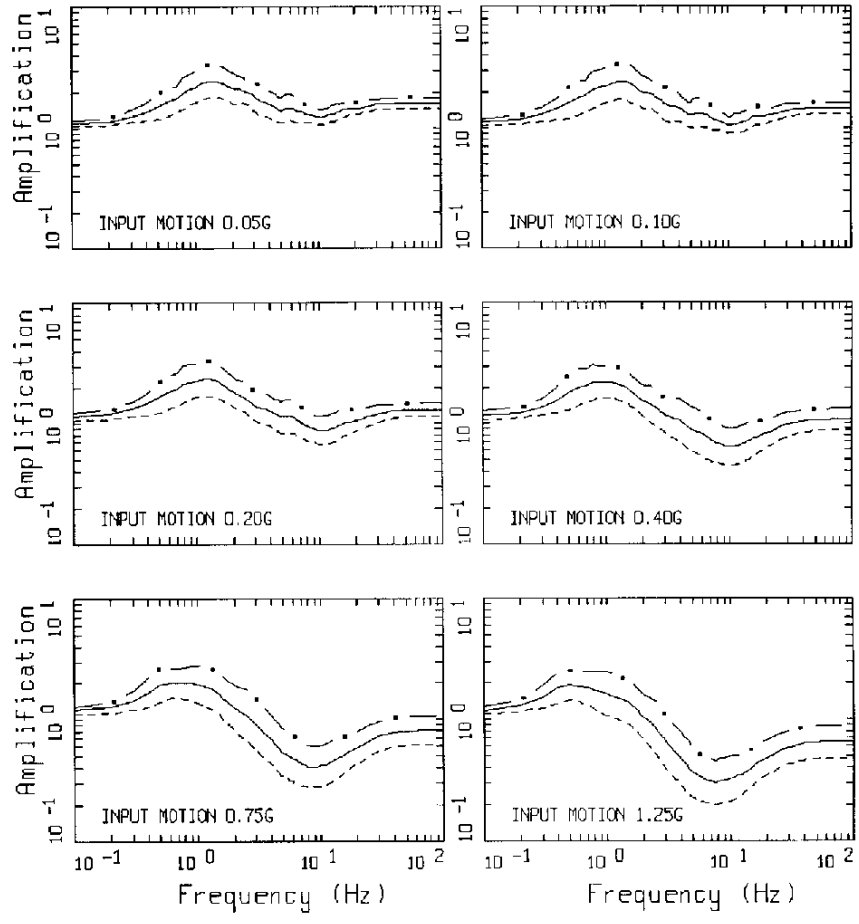
SF AMPLIFICATION
 Q0A (150 - 350 ft)



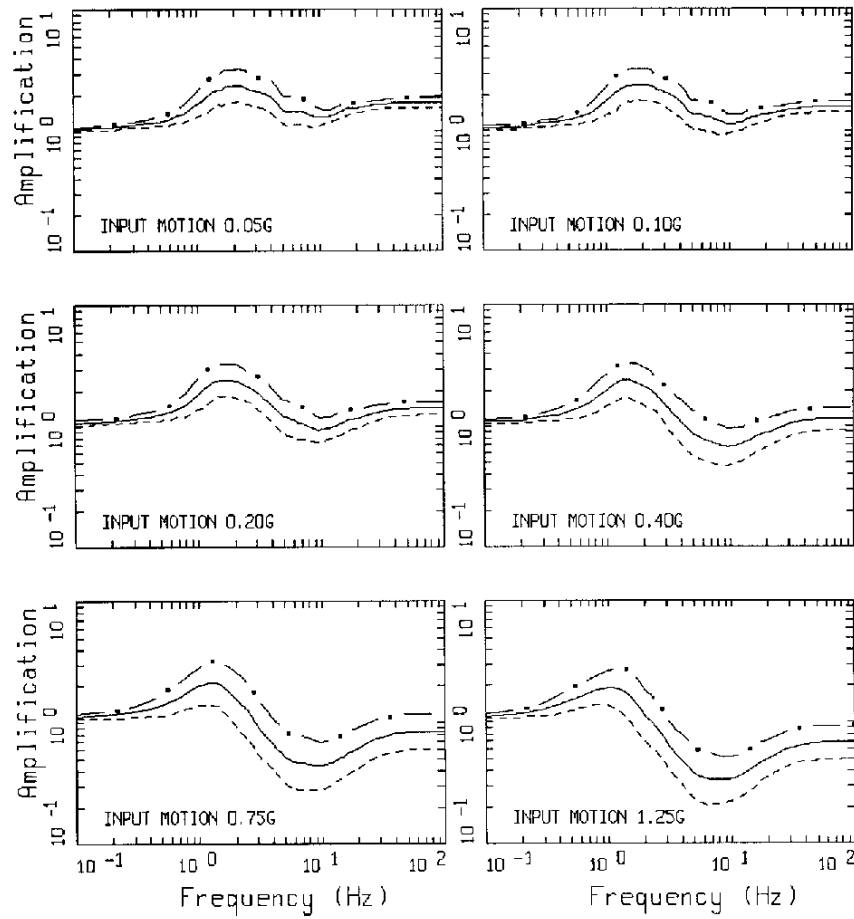
SF AMPLIFICATION
 QQA (350 - 650 ft)



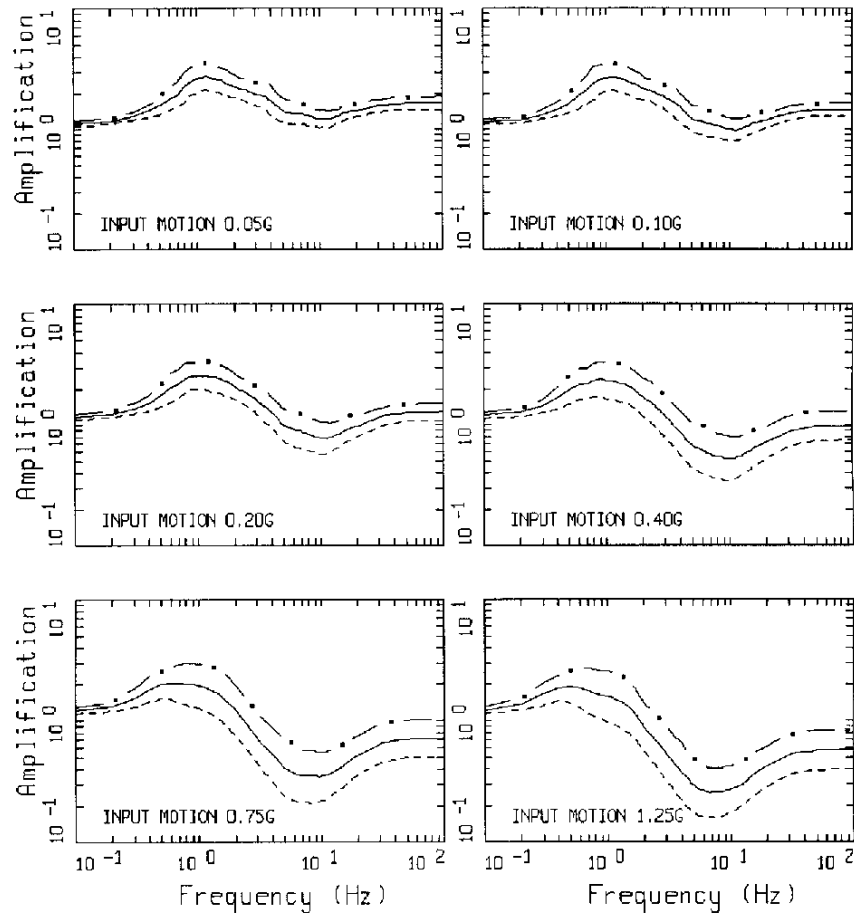
SF AMPLIFICATION
 QOA (30 - 1000 ft)



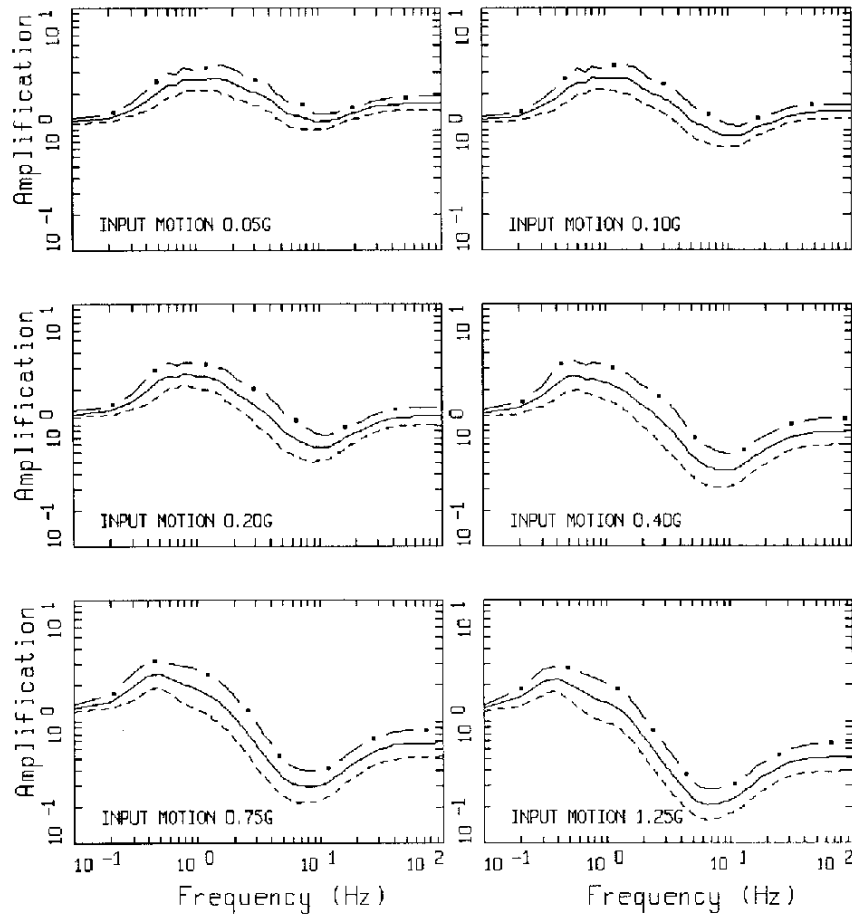
SF AMPLIFICATION
 Q0A (30 - 450 ft)



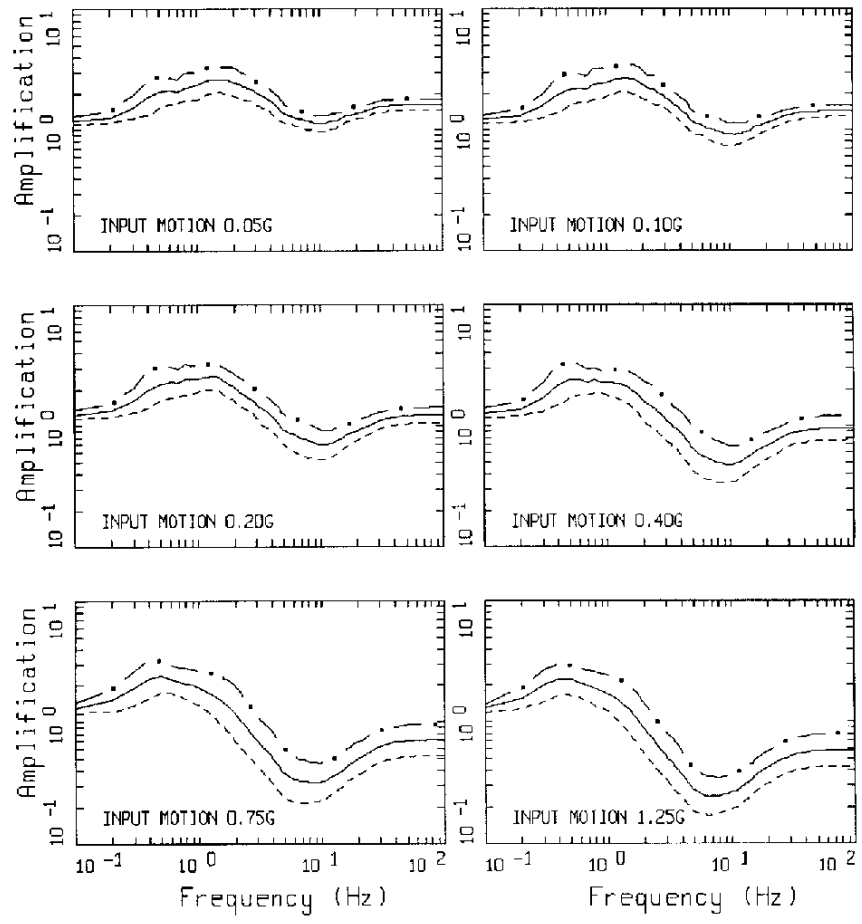
SF AMPLIFICATION
 QAL (30 - 150 ft)



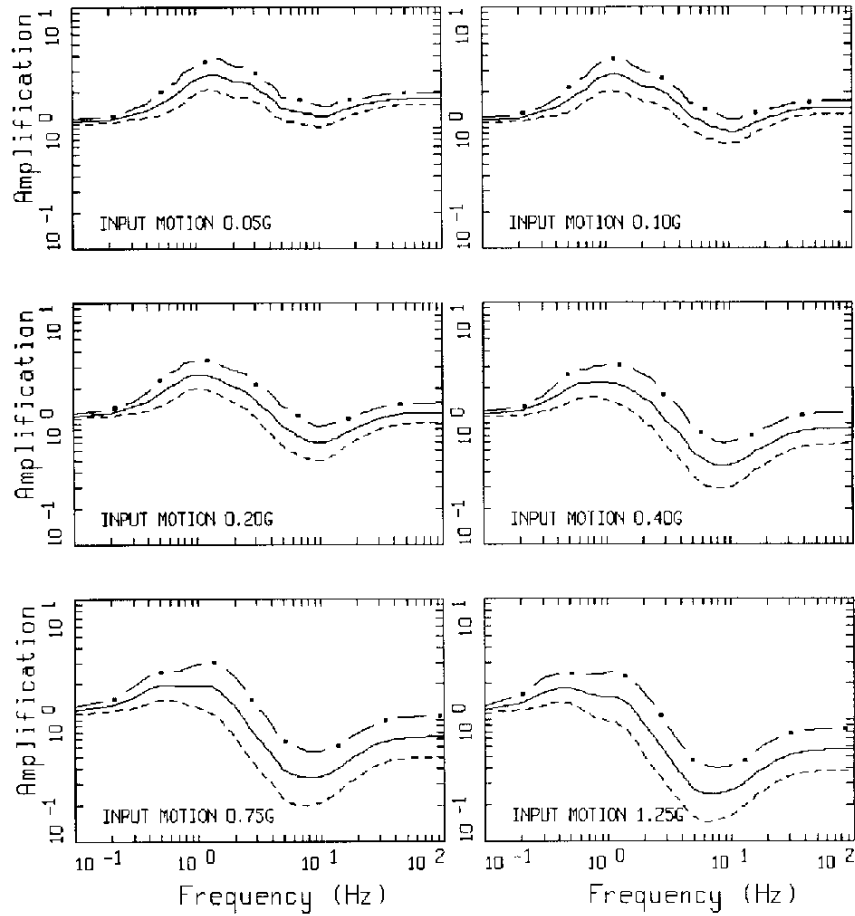
SF AMPLIFICATION
 QAL (150 - 350 ft)



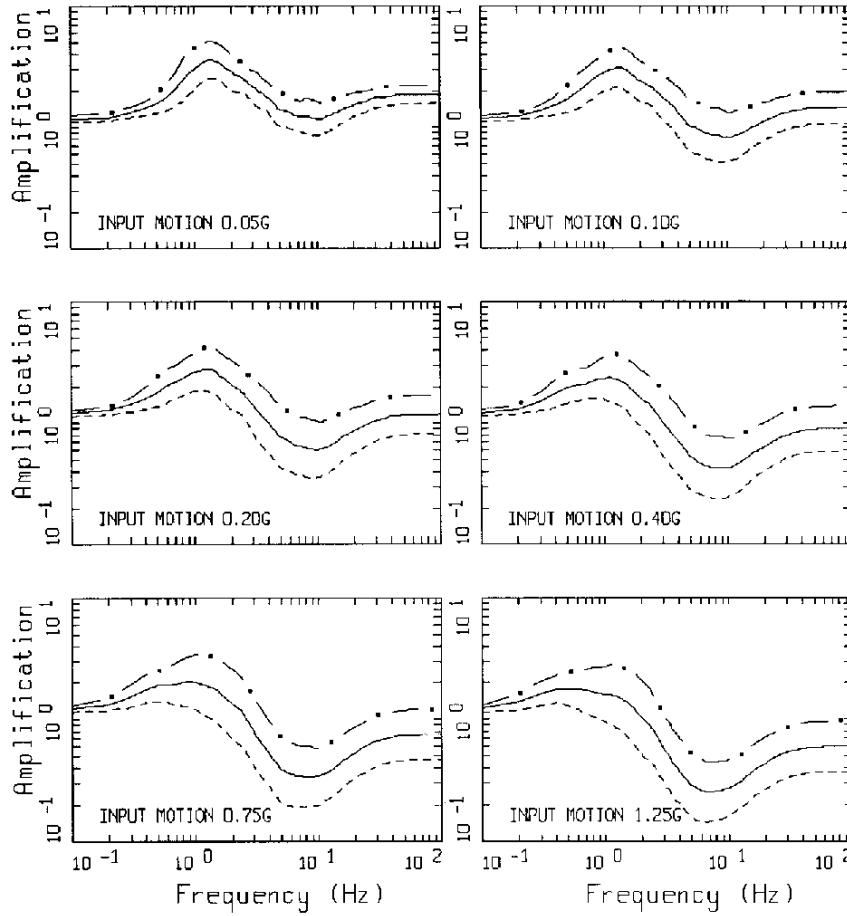
SF AMPLIFICATION
 QAL (350 - 650 ft)



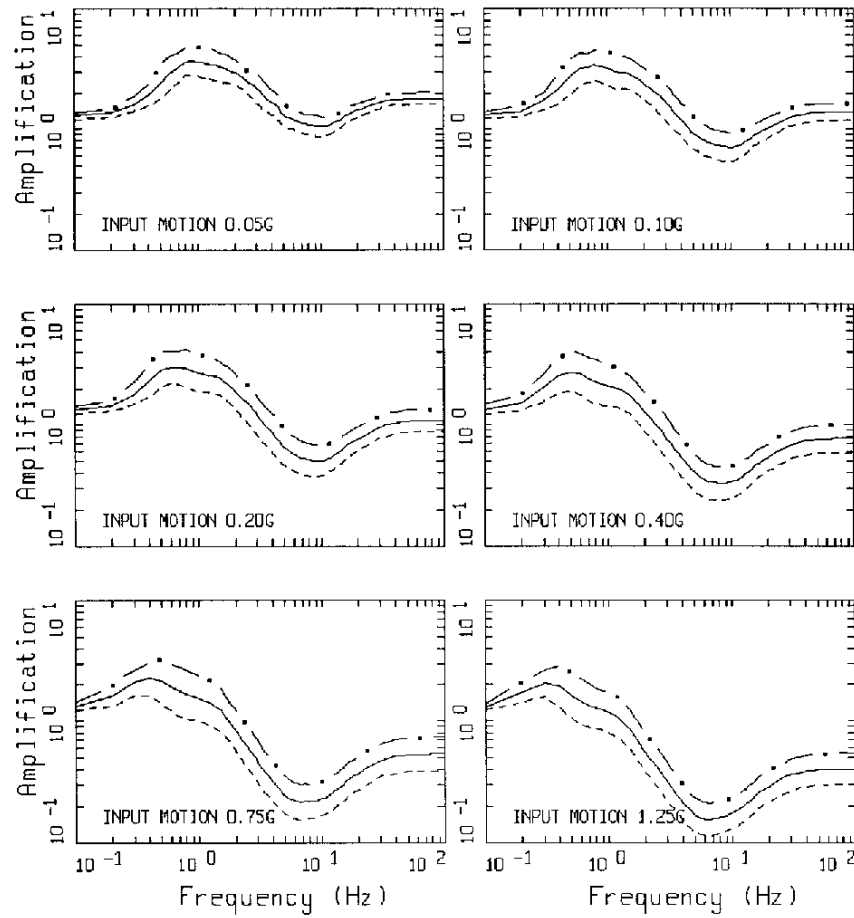
SF AMPLIFICATION
 QAL (30 - 1000 ft)



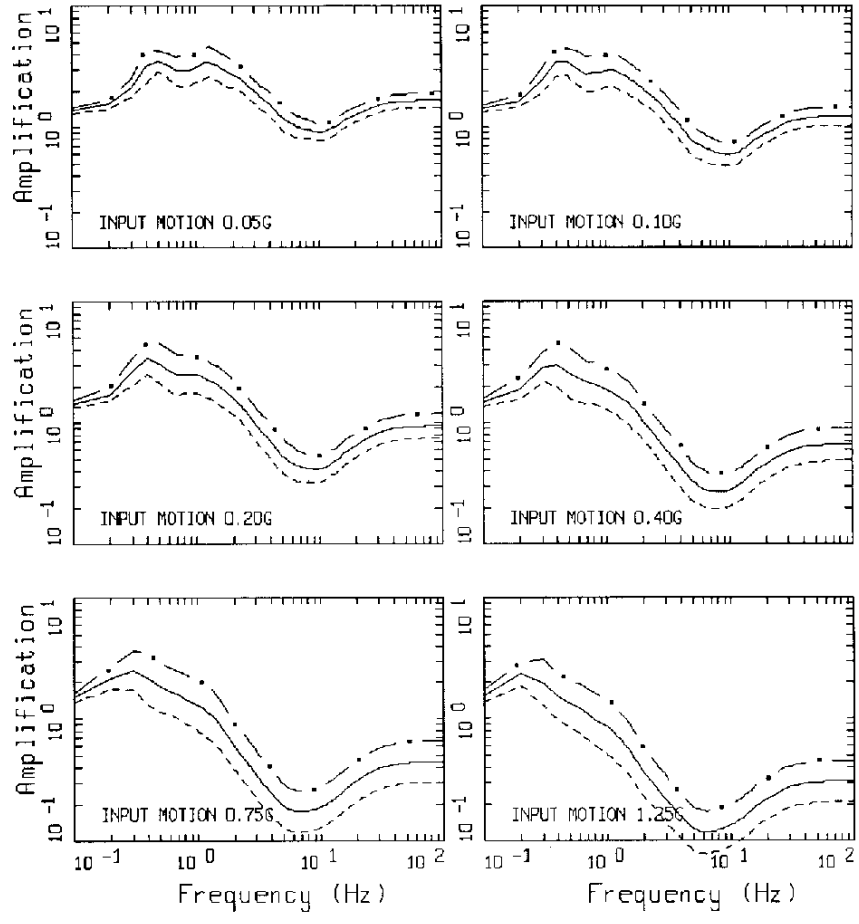
SF AMPLIFICATION
 QAL (30 - 450 ft)



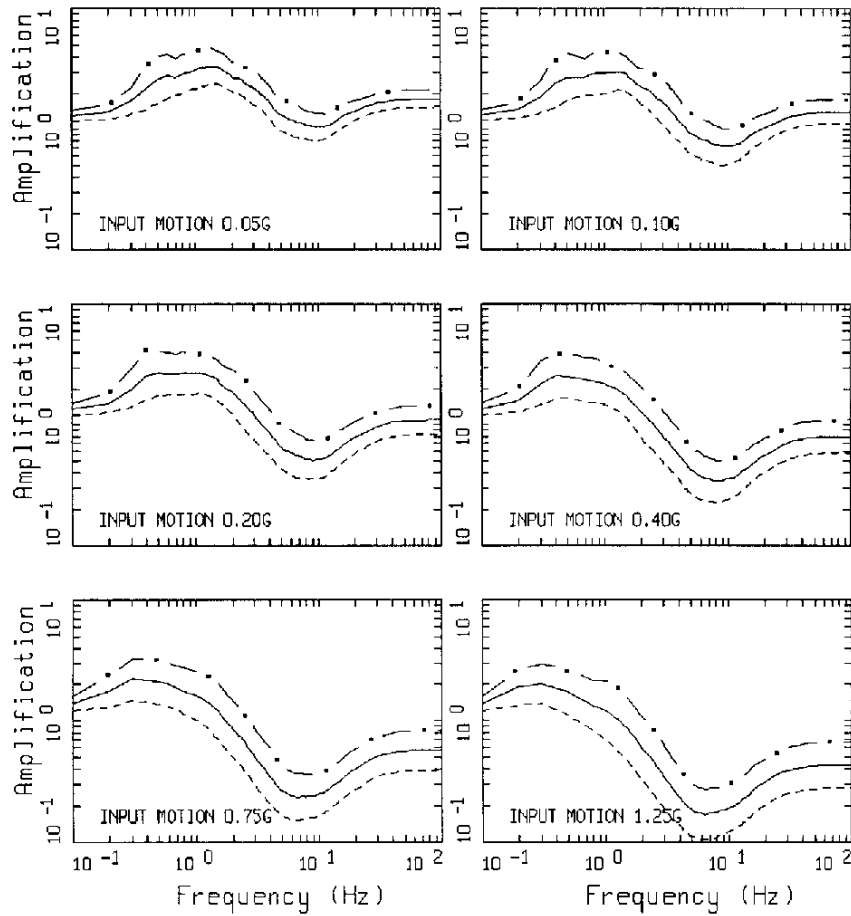
SF AMPLIFICATION
 Q_m (30 - 150 ft)



SF AMPLIFICATION
 Q_m (150 - 350 ft)



SF AMPLIFICATION
 Q_m (350 - 650 ft)



SF AMPLIFICATION
 Q_m (30 - 650 ft)